

Landair
Surveys



Aerial surveying and spatial solutions for
Government – Geospatial Imagery

Across Australia, Landair Surveys works with government agencies to deliver **reliable and high-quality** aerial data for effective urban planning, asset identification and management, map production, by-law enforcement and corporate GIS enquiries.

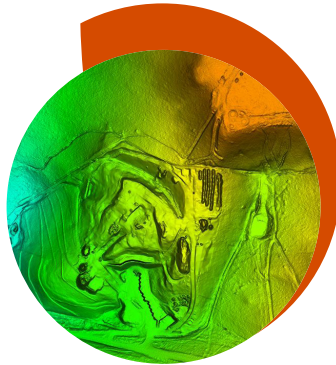
Learn more at landair.com.au/our-solutions/for-geospatial-imagery

Why choose Landair Surveys

Surveying for government clients means facing **unique challenges** – from meeting strict quality standards to addressing regional airspace restrictions. That's why we:



Know your needs, from wide regional surveys to high-resolution town captures.



Maintain rigorous quality checks and controls for reliable data across all projects.



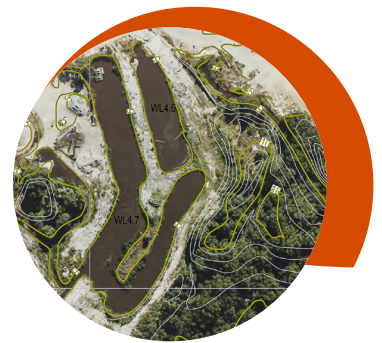
Are ready to respond to changes and tight timeframes, mobilising as soon as conditions allow.



Minimise capture time and risks due to adverse weather and airspace restrictions.



Operate within a robust framework that meets government standards and protocols.



Handle and store your data securely (not in the cloud), while ensuring your data ownership.

How we support your project

Our vertical and oblique aerial photography is ideal for the mapping, volumetric calculations and vegetation management that's so essential for government planning.

We capture your spatial data using...

- ✓ Aerial surveys with crewed aircraft
- ✓ Aerial surveys with RPAs (drones)

We deliver actionable data as...

- ✓ Aerial photos
- ✓ Digital elevation models
- ✓ Volume calculations
- ✓ Multi-band orthomosaics



See our success on a project like yours



Project
**Spatial Imagery
Services Program (SISP)**

Client
**Department of Resources
Queensland**

Completed
2023

Location
Daintree to Taroom, Queensland



Landair do what they say they will. When they mobilise to a site, they're there until the work is done. I can't remember a time they've missed a project status report. They make themselves available when we need them."

Amanda Secker

Spatial Imagery Coordinator at the
Department of Resources (Queensland)

Landair Surveys captured over 2,000 square kilometres of aerial imagery across 40 Queensland towns and 8 central islands. Conducted for the Queensland Department of Resources, this project provides high-resolution orthophotos and ortho mosaics to **support vital government functions** – such as GIS inquiries, urban growth planning, asset management and by-law enforcement.

Overcoming logistical challenges, including weather variability and aircraft maintenance, our team delivered precise orthorectified imagery. By eliminating distortions caused

by sensors, perspective and terrain relief, we created geographically accurate maps to serve as **essential tools for regional planning** and development.

See our **government geospatial partners**

Landair has worked alongside several **state and local governments**, on projects across environmental monitoring, urban planning and public asset management.



**Department of Natural Resources and Mines, Manufacturing, and
Regional and Rural Development**

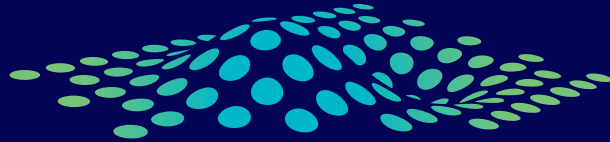


**Planning and
Environment**



**Department
of Transport
and Planning**





Landair

Surveys

1300 130 158 | info@landair.com.au

landair.com.au



Melbourne (head office)

1/87-91 Heatherdale Road
Ringwood VIC 3134

Sydney

Suite 18, 12 Tryon Road
Lindfield NSW 2070