

**Landair**  
Surveys



## Surveying and spatial solutions for **Architects**

---

Across New South Wales and Victoria, Landair Surveys is enabling architects **to plan and design with confidence** – by accurately capturing and sharing intricate building details and site features.

Learn more at [landair.com.au/our-solutions/for-architects](https://landair.com.au/our-solutions/for-architects)

# Why choose Landair Surveys

We know how important it is for architects to understand every detail of their projects – on coursework and decorative elements – down to the millimetre. **That's why we:**



Have decades of experience with architects and on heritage sites.



Make accuracy our priority, to deliver data that architects can trust.



Capture unmatched levels of detail in areas like stone and brickwork.



Know your processes and have appropriate public liability insurance.



Take safe work seriously and deliver data to meet tight timeframes.



Commit to supporting projects of various scales for the long term.

## How we support your project

Never experience a data shortfall again – with a solid foundation for planning, design, remediation or condition assessments.



## We capture your spatial data using...

- ✓ Feature and level surveys
- ✓ Underground services surveys
- ✓ 3D laser scanning
- ✓ UAV flyover surveys
- ✓ Title surveys
- ✓ Monitoring surveys

## We deliver actionable data as...

- ✓ Floorplans and RCPs
- ✓ Façade elevation plans
- ✓ Roof plans and imagery
- ✓ 3D models and point clouds
- ✓ Feature survey plans
- ✓ Section plans and verticality analyses



# See our success on a project like yours

Project  
**Werribee Park Mansion**

Client  
**Lovell Chen**

Completed  
**November 2023**

Location  
**Werribee South, Victoria**



*Landair has a lot of experience with heritage sites, which not all surveyors do, so they can provide a level of detail that others don't. Plus, they're very open and transparent on project timings."*

**Max Bracher**  
Senior Associate at Lovell Chen



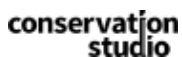
Landair Surveys was chosen by heritage architects Lovell Chen to document the external conditions of the historic Werribee Park Mansion. Built in the 1870s from basalt and sandstone, this iconic estate features intricate architectural details and expansive gardens. The survey **supported Parks Victoria's maintenance priorities**, including roof sealing, stormwater upgrades and stone façade management.

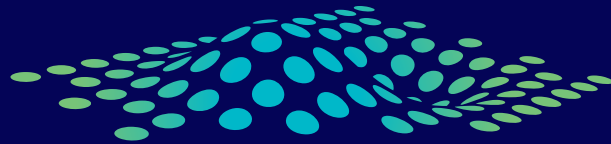
Over three months, Landair completed **120 hours of fieldwork and 450 hours of drafting**. Laser scanning captured detailed facades, while drone imagery provided high-resolution rooftop views. The team also conducted feature surveys

and underground tracing. The deliverables – including 2D and 3D files, precise point clouds, and stone outline drafts – now form a vital resource for this heritage landmark's ongoing restoration and asset management.

## See our **architect partners**

We've worked with established architects across New South Wales and Victoria who value our clear communication and quality outcomes.





**Landair**  
Surveys

1300 130 158 | [info@landair.com.au](mailto:info@landair.com.au)

**[landair.com.au](http://landair.com.au)**



**Melbourne** (head office)

1/87-91 Heatherdale Road  
Ringwood VIC 3134

**Sydney**

Suite 18, 12 Tryon Road  
Lindfield NSW 2070