



Landair
Surveys



Aerial surveying and spatial solutions for

Carbon, Biodiversity & Environmental Service Firms

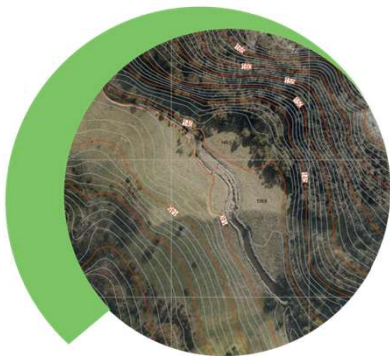
Across Australia, Landair Surveys works with environmental market firms to deliver **reliable and high-quality** aerial data for effective planning, measurement, monitoring and verification for environmental projects.

Learn more at landair.com.au/our-solutions/environmental-imagery

Why choose Landair Surveys

Surveying for environmental market clients means facing unique challenges – from meeting strict quality & consistency standards to tight timing windows and coverage challenges.

That's why we:



Know your needs, from thousands of square kms to dozens of sites across remote areas.



Operate within a robust framework that meets government standards and protocols.



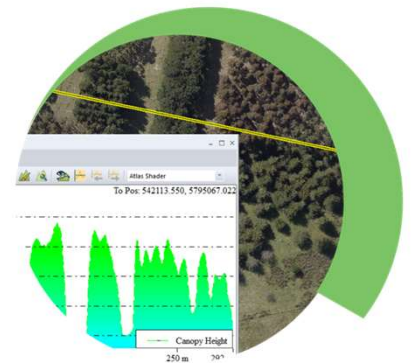
Maintain rigorous quality checks and controls for reliable data across all projects.



Minimise capture time and risks due to adverse weather and airspace restrictions.



Are ready to respond to tight timeframes, mobilizing as soon as weather allows.



Achieve high spatial accuracy without ground survey.

How we support your project

Our aerial imagery is ideal for baseline land cover maps, precise project area boundaries, visual evidence for approvals, and change detection. The imagery may be used to quantify plant cover and vigor, identify eligible vs ineligible forest areas, and monitor regrowth/health over time, as well as calculating analytical layers such as canopy height models, fractional vegetation cover maps, burn area maps, and habitat condition indices.

We capture your spatial data using...

- ✓ Crewed twin engine aircraft
- ✓ Phase One 280i large format and Leica RCD30 medium format airborne sensor systems

We deliver actionable data as...

- ✓ Orthophoto Mosaics
- ✓ Near Infrared Imagery
- ✓ Digital Surface, Terrain and Canopy Height Models
- ✓ Colour Infrared and Vegetation Indices

See our success on a project like yours



Project
Statewide Planned Burns

Client
**Department of Transport
and Planning (Vic)**

Completed
2022-2025

Location
**Gippsland and Barwon
South West, Victoria**



*Definitely responsive and clear
communications.
Putting in a quality response*



Michael Conroy
Department of Transport and Planning (Vic)

Landair surveys supported the Victorian Department of Environment, Land, Water and Planning (DELWP) by capturing imagery of planned burn sites across the Gippsland and Barwon South West regions. This imagery is critical for mapping fire severity and extent, helping to minimize bushfire risk by reducing fuel loads through the planned burns program.

The project required precise coordination as burn sites became ready for capture at different times. Imagery had to be acquired within four weeks of readiness and delivered within three weeks of capture. Working across remote and mountainous areas, we relied on advanced weather forecasting and flexible operations to ensure timely and high-quality results

Services

Aerial photography (20cm Ground Sample Distance or better) using crewed aircraft and specialized airborne sensor system

Key Outcomes

- ✓ Relaxed accuracy four-band orthophotography tiles (RGBI) in TIFF format
- ✓ Overview mosaics (IR, RGB, CIR) in ECW format
- ✓ Associated metadata in ESRI shapefile formats



Landair

Surveys

1300 130 158 | info@landair.com.au

landair.com.au



Melbourne (head office)

1/87-91 Heatherdale Road
Ringwood VIC 3134

Sydney

Suite 18, 12 Tryon Road
Lindfield NSW 2070